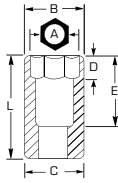


1" DRIVE IMPACT SOCKETS

- ▶ Proto® 6 Point Impact Sockets are ideal for use on stubborn or damaged fasteners, and also on fasteners made from soft materials.
- ▶ Stamped size for easy reference.
- ▶ Side locking hole.



- ▶ Radius-corner socket design
- ▶ Engages flats for better grip
- ▶ Improves the ability to turn worn or rounded fasteners

INCH	6	12	Nut End Outside Diameter (in) (B)	Drive End Outside Diameter (in) (C)	Nut Depth (in) (D)	Bolt Clearance Depth (in) (E)	Overall Length (in) (L)	Weight (lbs)	Crush Retaining Ring	O-Ring	Retaining Pin
3/4	J10012	J10012T	1-7/16	2-1/8	19/32	1-5/16	2-7/16	1.11	JRR10028	J10000R1	J10000P1
13/16	J10013	-	1-1/2	2-1/8	5/8	1-3/8	2-1/2	1.07	JRR10028	J10000R1	J10000P1
7/8	J10014	J10014T	1-17/32	2-1/8	21/32	1-3/8	2-1/2	1.17	JRR10028	J10000R1	J10000P1
15/16	J10015	J10015T	1-39/64	2-1/8	19/32	1-3/8	2-1/2	1.19	JRR10028	J10000R1	J10000P1
1	J10016	J10016T	1-3/4	2-1/8	3/4	1-3/8	2-1/2	1.19	JRR10028	J10000R1	J10000P1
1-1/16	J10017	J10017T	1-3/4	2-1/8	7/8	1-1/2	2-5/8	1.28	JRR10028	J10000R1	J10000P1
1-1/8	J10018	J10018T	1-13/16	2-1/8	7/8	1-1/2	2-5/8	1.27	JRR10028	J10000R1	J10000P1
1-3/16	J10019	-	1-7/8	2-1/8	7/8	1-1/2	2-5/8	1.50	JRR10028	J10000R1	J10000P1
1-1/4	J10020	J10020T	2-1/8	2-1/8	15/16	1-1/2	2-5/8	1.50	JRR10028	J10000R1	J10000P1
1-5/16	J10021	J10021T	2-1/8	2-1/8	15/16	1-5/8	2-3/4	1.45	JRR10028	J10000R1	J10000P1
1-3/8	J10022	J10022T	2-1/8	2-1/8	1-1/32	1-5/8	2-3/4	1.65	JRR10028	J10000R1	J10000P1
1-7/16	J10023	J10023T	2-1/8	2-1/8	1-1/32	1-5/16	2-7/16	1.71	JRR10028	J10000R1	J10000P1
1-1/2	J10024	J10024T	2-3/8	2-3/8	1-1/4	1-1/2	2-5/8	1.89	JRR10028	J10000R1	J10000P1
1-9/16	J10025	-	2-3/8	2-3/8	1-1/4	1-1/2	2-5/8	2.14	JRR10032	J10000R2	J10000P2
1-5/8	J10026	J10026T	2-15/32	2-3/8	1-1/4	1-1/2	2-5/8	2.11	JRR10032	J10000R2	J10000P2
1-11/16	J10027	J10027T	2-39/64	2-3/8	1-1/8	1-11/16	2-13/16	2.18	JRR10032	J10000R2	J10000P2
1-3/4	J10028	J10028T	2-11/16	2-3/8	1-1/8	1-11/16	2-13/16	2.63	JRR10034	J10000R2	J10000P2
1-13/16	J10029	-	2-51/64	2-3/8	1-1/8	1-1/16	2-13/16	2.55	JRR10034	J10000R2	J10000P2
1-7/8	J10030	J10030T	2-51/64	2-3/8	1-1/4	1-7/8	3	2.75	JRR10034	J10000R2	J10000P2
1-15/16	J10031	-	2-7/8	2-3/8	1-1/4	1-7/8	3	3.01	JRR10034	J10000R2	J10000P2
2	J10032	J10032T	3	2-3/8	1-1/4	1-7/8	3	3.10	JRR10034	J10000R2	J10000P2
2-1/16	J10033	J10033T	3	2-3/8	1-9/16	1-9/16	3-3/32	3.04	JRR10034	J10000R2	J10000P2
2-1/8	J10034	-	3-1/8	2-3/8	1-3/8	1-9/16	3-3/32	3.30	JRR10034	J10000R2	J10000P2
2-3/16	J10035	-	3-1/4	2-3/8	1-3/8	1-9/16	3-1/8	3.54	JRR10034	J10000R2	J10000P2
2-1/4	J10036	J10036T	3-5/16	2-3/8	1-1/2	1-21/32	3-1/4	3.60	JRR10034	J10000R2	J10000P2
2-5/16	J10037	-	3-7/16	2-3/8	1-1/2	1-23/32	3-21/64	4.13	JRR10034	J10000R2	J10000P2
2-3/8	J10038	J10038T	3-1/2	2-3/8	1-1/2	1-3/4	3-3/8	4.07	JRR10034	J10000R2	J10000P2
2-7/16	J10039	-	3-1/2	2-3/8	1-5/8	1-3/4	3-25/64	4.12	JRR10034	J10000R2	J10000P2
2-1/2	J10040	-	3-5/8	2-3/8	1-5/8	1-13/16	3-1/2	4.15	JRR10034	J10000R2	J10000P2
2-9/16	J10041	-	3-47/64	2-3/8	1-5/8	1-13/16	3-1/2	4.94	JRR10040	-	-
2-5/8	J10042	-	3-3/4	2-3/8	1-3/4	1-15/16	3-5/8	4.92	JRR10040	-	-
2-11/16	J10043	-	3-7/8	2-3/8	1-3/4	1-15/16	3-21/32	5.39	JRR10040	-	-
2-3/4	J10044	-	3-7/8	2-3/8	1-3/4	2	3-3/4	5.39	JRR10040	-	-
2-13/16	J10045	-	4	2-3/8	1-7/8	2-3/64	3-13/16	5.99	JRR10040	-	-
2-7/8	J10046	-	4-1/16	2-3/8	1-7/8	2-5/64	3-7/8	5.95	JRR10040	-	-
2-15/16	J10047	-	4-1/8	2-3/8	1-7/8	2-1/16	3-7/8	6.11	JRR10040	-	-
3	J10048	-	4-1/4	2-3/8	2	2-3/16	4	6.77	JRR10040	-	-
3-1/8	J10050	-	4-3/8	2-3/8	2	2-3/16	4-1/16	6.94	JRR10040	-	-
3-1/4	J10052	-	4-1/2	2-3/8	2	2-15/32	4-3/8	7.62	JRR10040	-	-
3-3/8	J10054	-	4-9/16	2-3/8	2-1/4	2-15/32	4-7/16	7.80	JRR10040	-	-
3-1/2	J10056	-	4-3/4	2-3/8	2-1/4	2-1/2	4-1/2	8.45	JRR10040	-	-
3-5/8	J10058	-	4-7/8	2-3/8	2-1/4	2-35/64	4-3/4	10.59	-	-	-
3-7/8	J10062	-	5-1/16	2-3/8	2-1/4	2-31/32	5	12.20	-	-	-
4	J10064	-	5-3/4	2-3/8	2-1/2	4-3/8	5-1/2	14.89	-	-	-
4-1/8	J10066	-	6	2-3/8	2-3/4	4-5/8	5-1/2	15.26	-	-	-
4-1/4	J10068	-	6	2-3/8	2-3/4	4-5/8	5-1/2	15.56	-	-	-
4-1/2	J10072	-	6-1/4	2-3/8	3	4-7/8	6	17.61	-	-	-

ASME B107.2